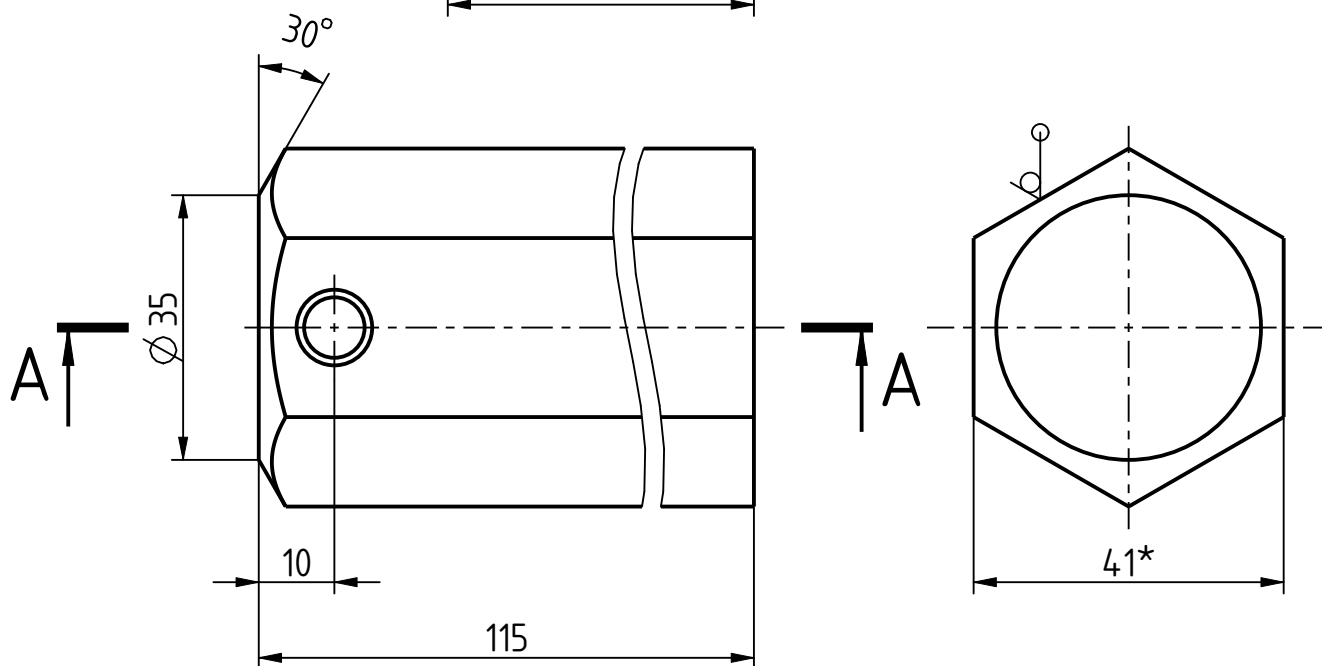


$\sqrt{\text{Ra } 6,3} (\checkmark)$ 

Technical drawing of a mechanical part (likely a bush or sleeve) showing a cross-section. The part has a total length of 90. It features a central hole with a diameter of  $\varnothing 8$  and a central protrusion of length 80. The part has chamfers of  $1 \times 45^\circ$  and  $2,5 \times 45^\circ$ . Surface roughness is specified as  $Ra 1,6$  and  $Ra 3,2$ . The central hole is labeled  $M20-6H$ . The part is shown with a dashed line indicating the center of the hole.



3 Покрытие: Ц6...9. хр. по ГОСТ 9.306-85.

1				
Изм.	Лист	№ докум.	Подп.	Дата
Разраб.		Савицкая		16.01.25
Пров.		Кулик		
Т. контр.				
Н. контр.		Кулик		
Учтв.				

Γαῦκα

Лум.				Масса	Масштаб
				1,12	1:1
Лусм				Лусмов 1	

УГТ МЗКТ

Формат: А4